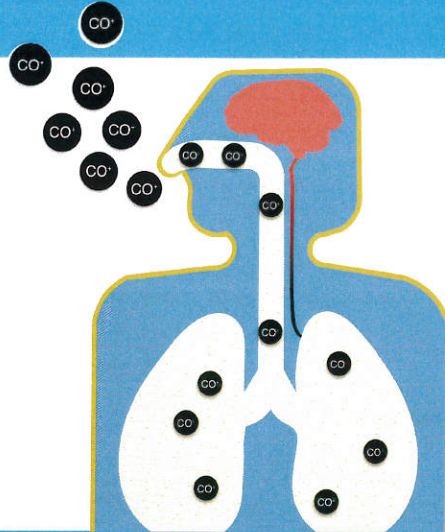


# co+Impact: 12 month review



Roland Wessling and Jessica Bolton

30/07/2015

[www.cranfield.ac.uk](http://www.cranfield.ac.uk)

## Project Overview

- August 2014: 1 year in
- The true impact of CO on the population in home and leisure environments
- Review literature, identify knowledge status, propose research



## Key Updates

- Progress in specific aims
- New work flow
- Proposed report sections
- Gaps identified
- Proposed projects
- Proposed journal articles

### Project Criteria

1	Source Collation	60%
2	Research Collaboration	60%
3	Project Proposals	50%
4	Exposure Limit	60%
5	Poisoning Database	50%
6	Alarms	40%
7	ICD codes	60%
8	Environments	10%
9	Council Support	10%

## Report Writing



- New categories for chapters and research
- New work flow
- The opinion of the GST is appreciated for an inclusive review



- ◆ **Collaboration: Progress, Groups and Councils**
- ◆ **Alarm Installation**
- ◆ **Alarms: Detection and Technology**
- ◆ **Reaching Councils: Research and Support**
- ◆ **Poisoning: Detection and Treatment**
- ◆ **Fire Related CO Poisoning**
- ◆ **Home Environment**
- ◆ **Leisure: Boats, Tents, Hotels**
- ◆ *Research Project Proposals*



## Source Collation

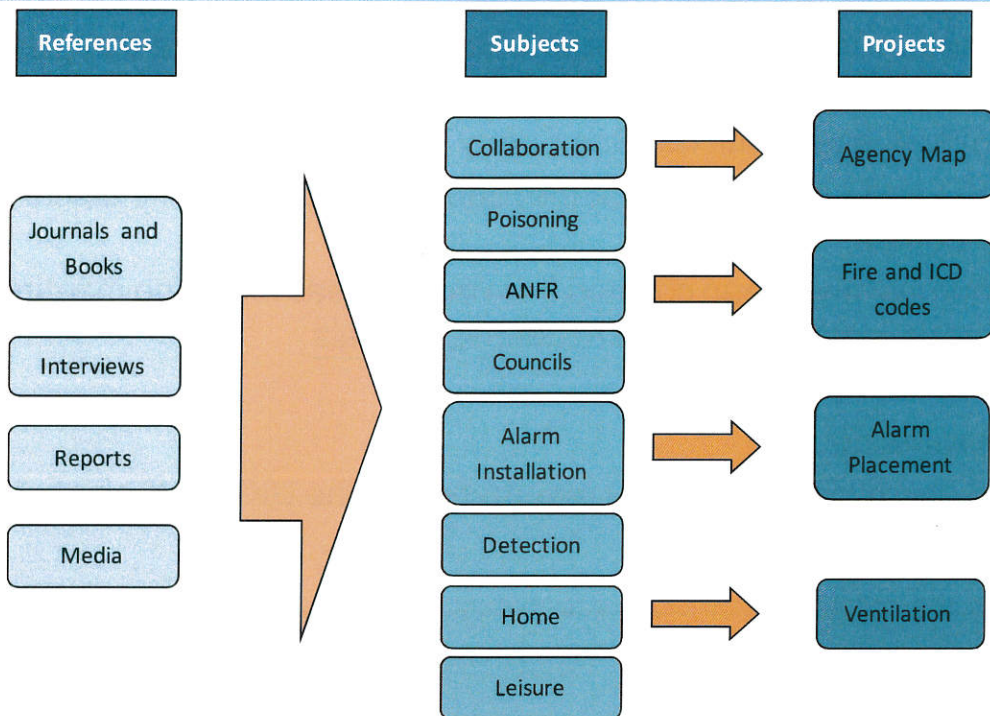
- Review of the existing research concerning CO<sup>+</sup> in the suggested environments
- Coincided well with the Gas Safety Trust academic portal
- More streamlined now that the report has more specific research outcomes
- Sources have been collated from many areas including meetings, reports, conferences and academic journals
- British library
- Networking
- GST provided a list of CO researchers in the UK and their contact details: updated

## Research Collaboration

- Many agencies who are somehow involved in CO research that should be collaborated with
- Science and Technology group on CO (part of the All Fuels Forum)
- Collaboration with the Medical and Healthcare group (also part of the All Fuels Forum)
- CO<sup>+</sup> SciTech joint bid for the maintenance of the Academic Portal
- Cranfield University and Public Health England and the imminent pilot study on coroner's COHb data
- Recent changes in legislation concerning CO by the housing sector in conjunction with changes to smoke alarm laws
- A proposed section of the report: progress and current actions be discussed
- A project is proposed to map all the involved agencies with a link to CO

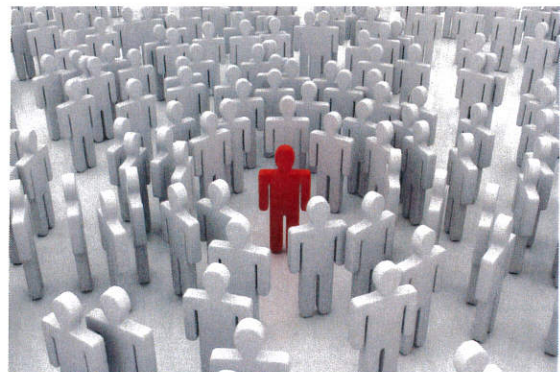


# Project Proposals



## PP: ICD Fire Codes

- Current ICD-10 has fewer codes for CO than ICD-9: reduced information
- Many codes for fire-related deaths which can often be linked with CO
- Fire-related CO deaths are excluded from research as they are deemed not preventable by the same strategies
- Overlap between fire and non-fire related cases than assumed: missing sample
- A gas/fireplace can cause CO poisoning: exclude in ICD non-fire related studies
- Few cases are actually attributed as fire related CO poisoning
- A study should be conducted to determine what fire codes are often related to CO and why





## PP: Alarm Placement

- Several studies conclude CO alarms should be positioned:
- Just above door frame height, 1-3m away from a fuel burning appliance
- No 'one size fits all' answer
- Sources of advice to consumers state different positions for CO alarms
- Alarms provide accompanying guides
- Recommendation of the APPCOG 2014 inquiry is that the guides become more user-friendly
- Easily-accessible 'wrong information', such as on the internet, is dangerous
- Especially if installation guides do not improve
- How can accurate information can be disseminated?
- Why do individuals deviate from the guidelines established in the installation guide?



## PP: Home Ventilation

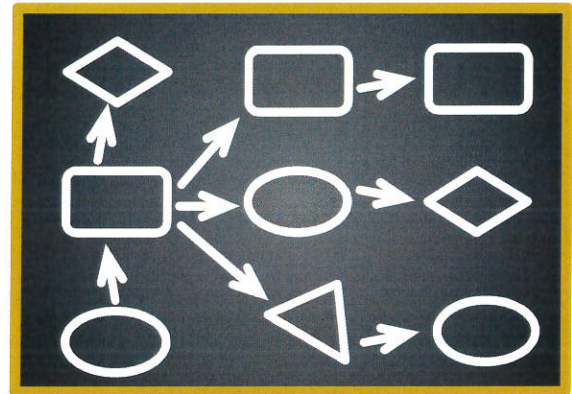
- Health and cost, pros and cons of energy efficient housing
- Increased insulation, air tightness and ventilation
- CO has not been investigated
- The increased air tightness of homes is commonly quoted in CO circles as a cause for accidental carbon monoxide poisoning in the home
- An assumption based on studies looking at other toxins
- To be taken seriously be considered amongst energy efficiency debate, this research must be conducted with CO





## PP: CO Agency Map

- Based on a recent study in the field of energy efficiency
- A detailed map of related agencies, how they interact and affect each other
- Agencies met physically to advise the map during its construction
- Beneficial to produce one of these for CO research that can be updated
- Show where pros and cons exist
- Where changes can be made
- Areas that can push for changes in CO legislation
- Mapped and related visually with the issues of industry and local councils



## Future Timescale

- Continued collation of sources and the reading and reviewing of information for the final report
- Visit to the British Library
- Communications with those actively involved in areas of CO
- The final write-up of the report
- Project proposals
- Cranfield University: two journal

Write up

Articles

Aug 2014

Jan 2015

Aug 2015

Jan 2016

Aug 2016

Resource Collation and Review

Project Proposals

Thank you for listening, are there  
any questions?



